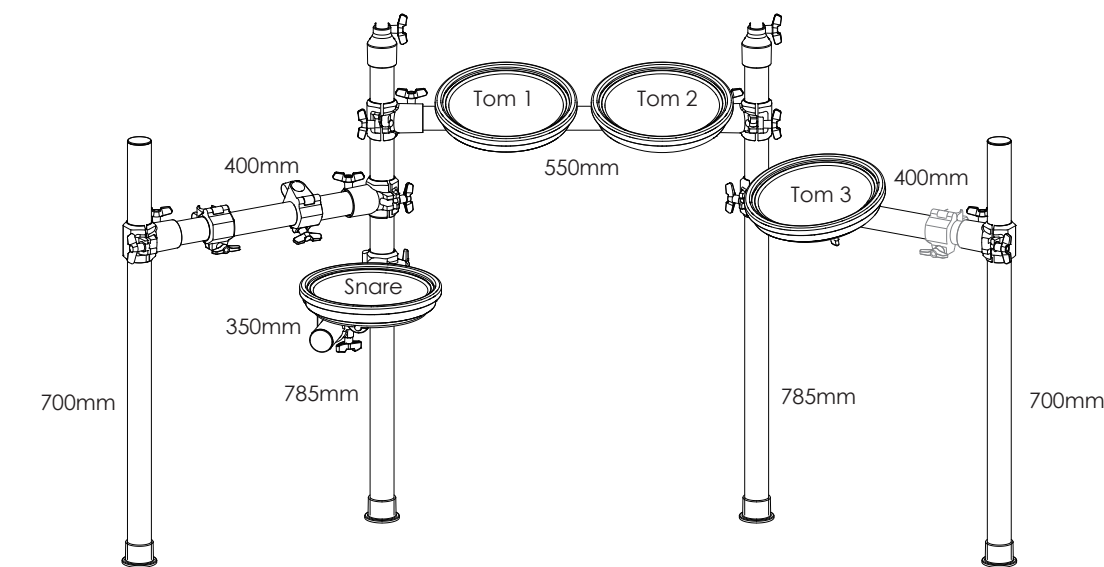
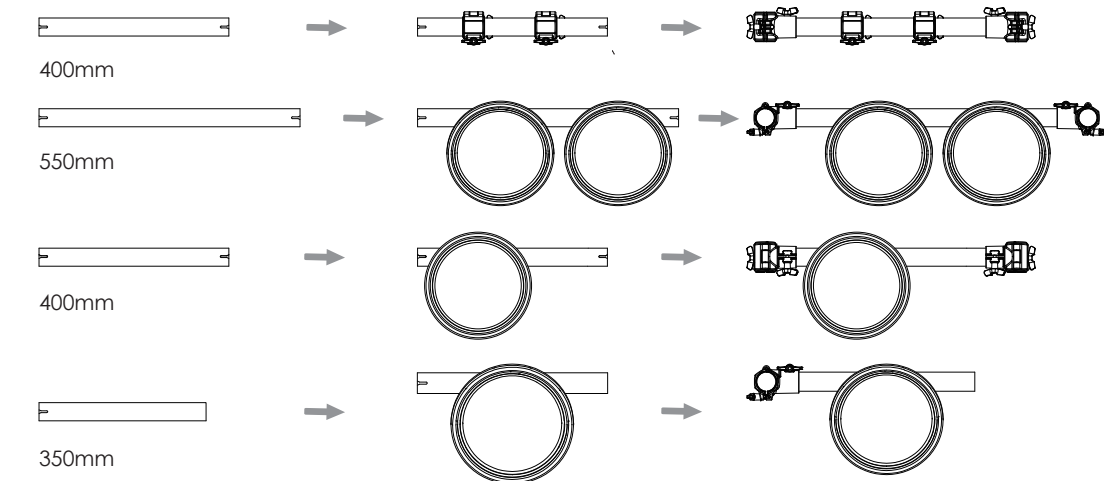
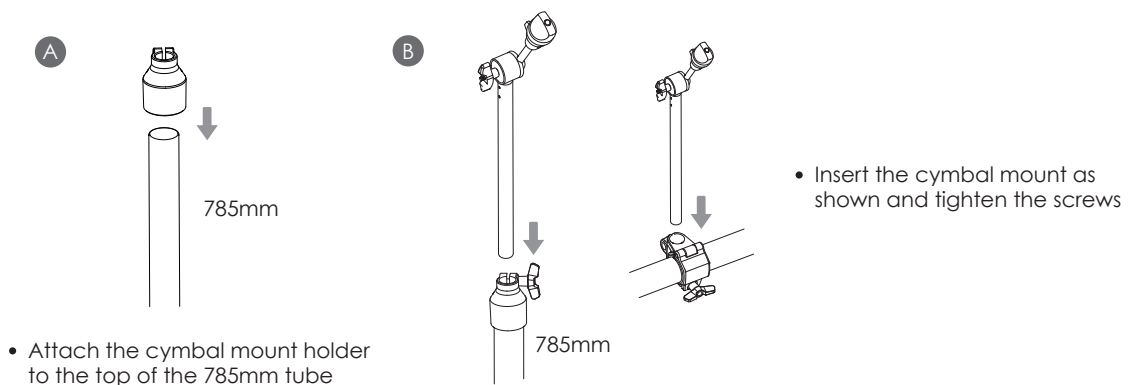
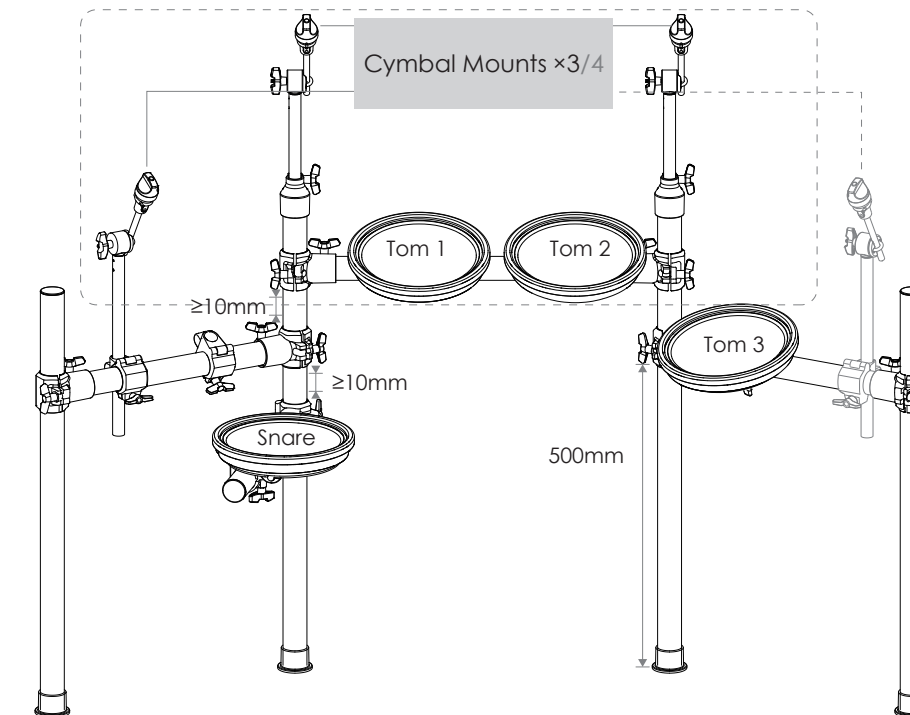


1. Assemble the Stand and Pad

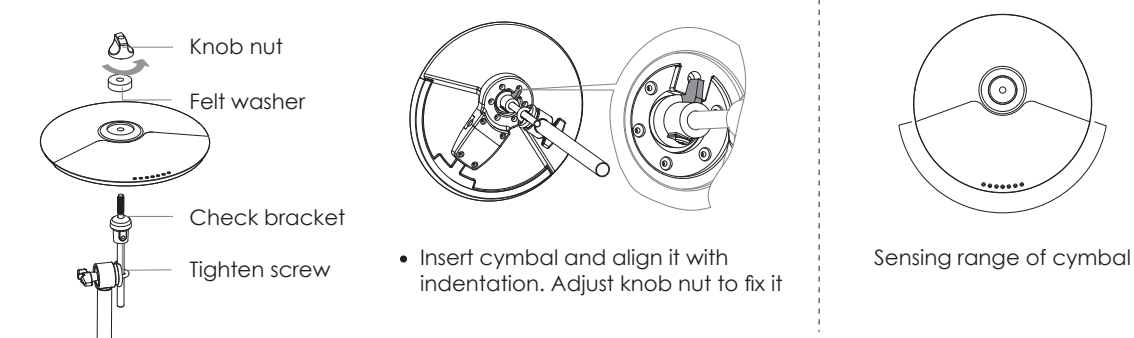
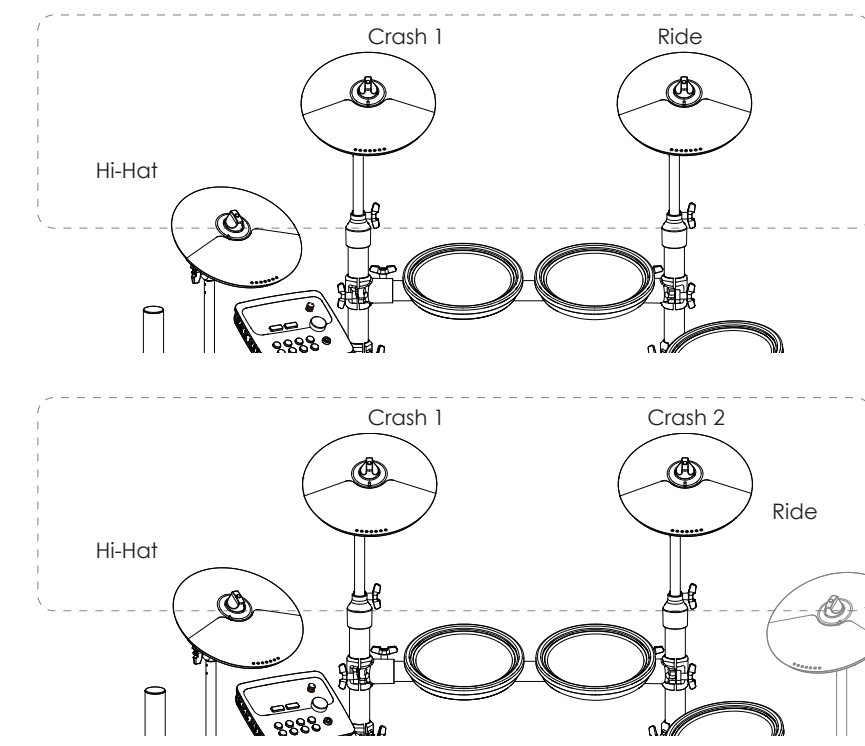
HAMPBACK

- According to above figure, to assemble the stand and pad in turn.

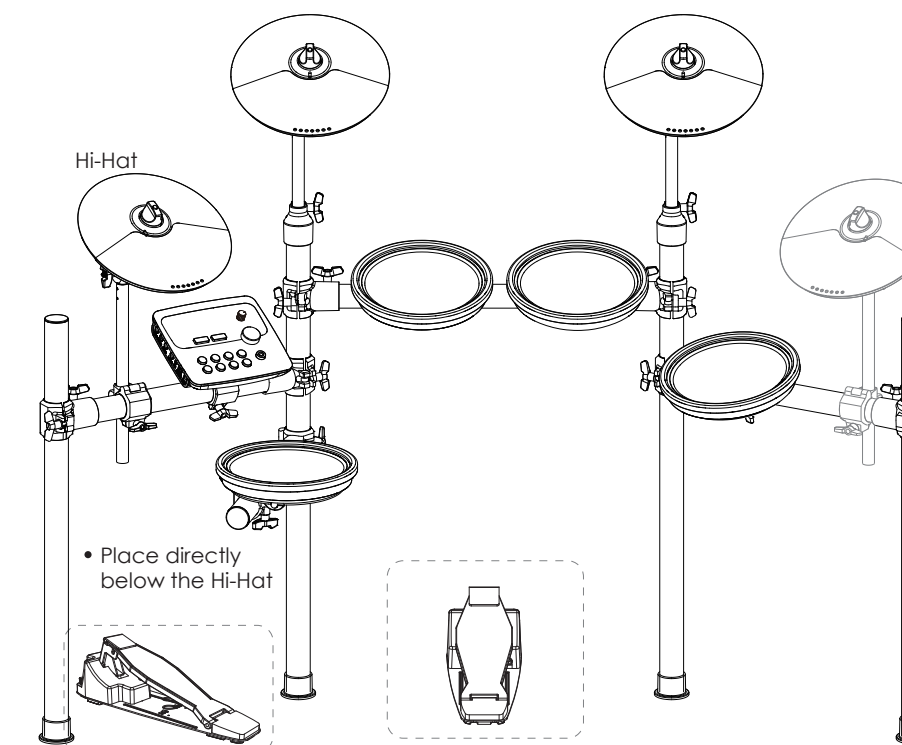
2. Assemble the Cymbal Mounts



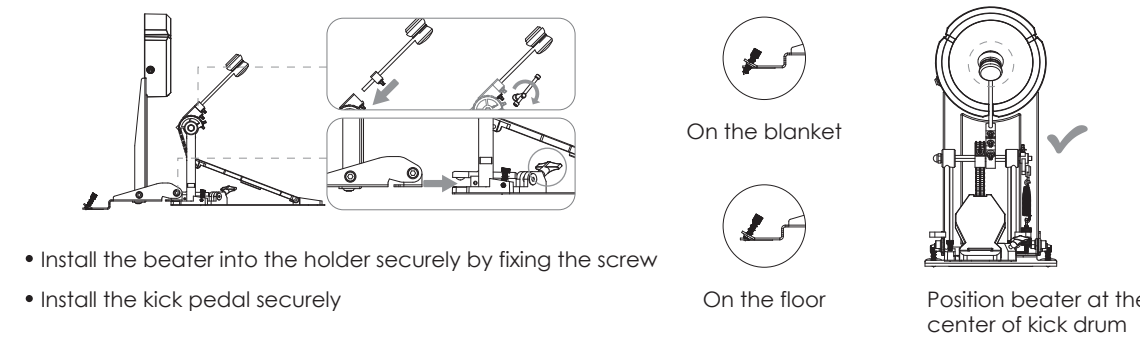
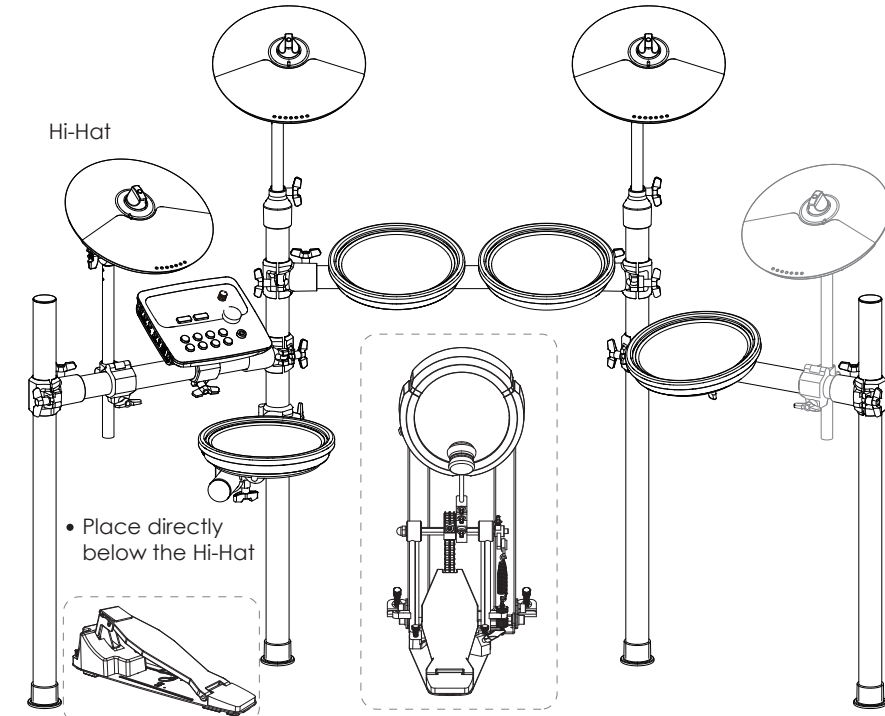
3. Attach the Cymbals



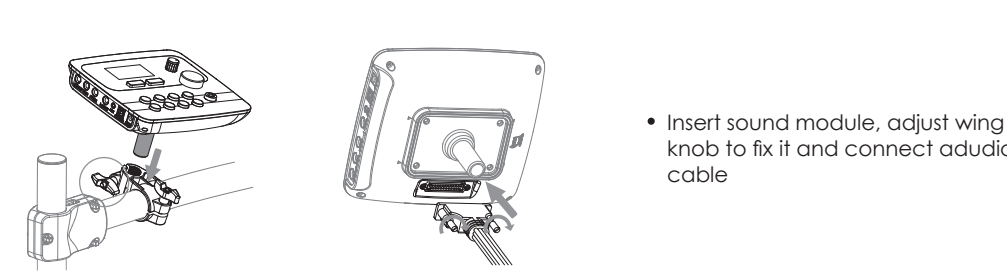
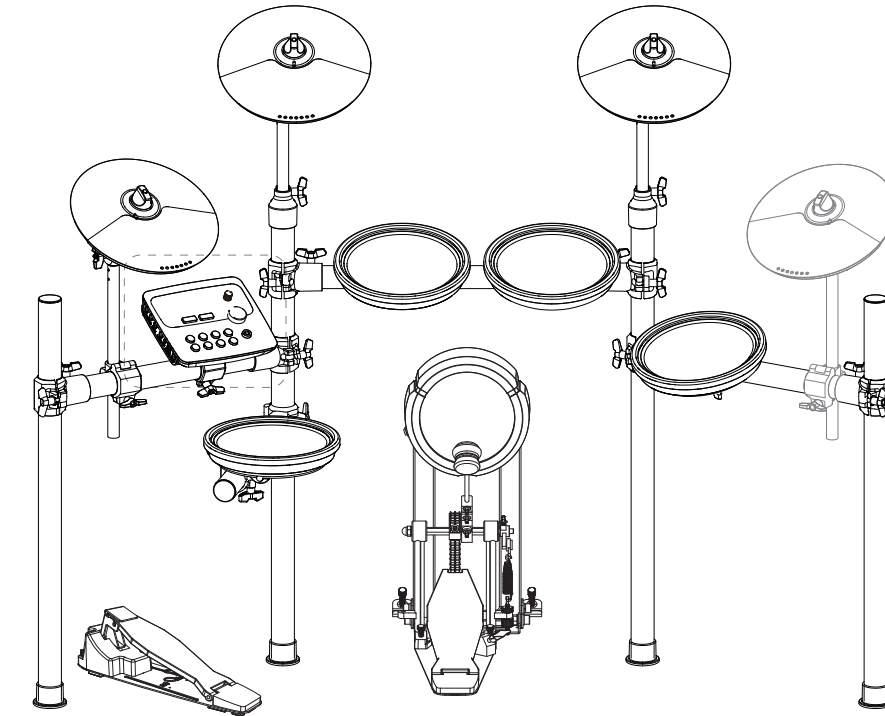
4-A. Attach the Pedals



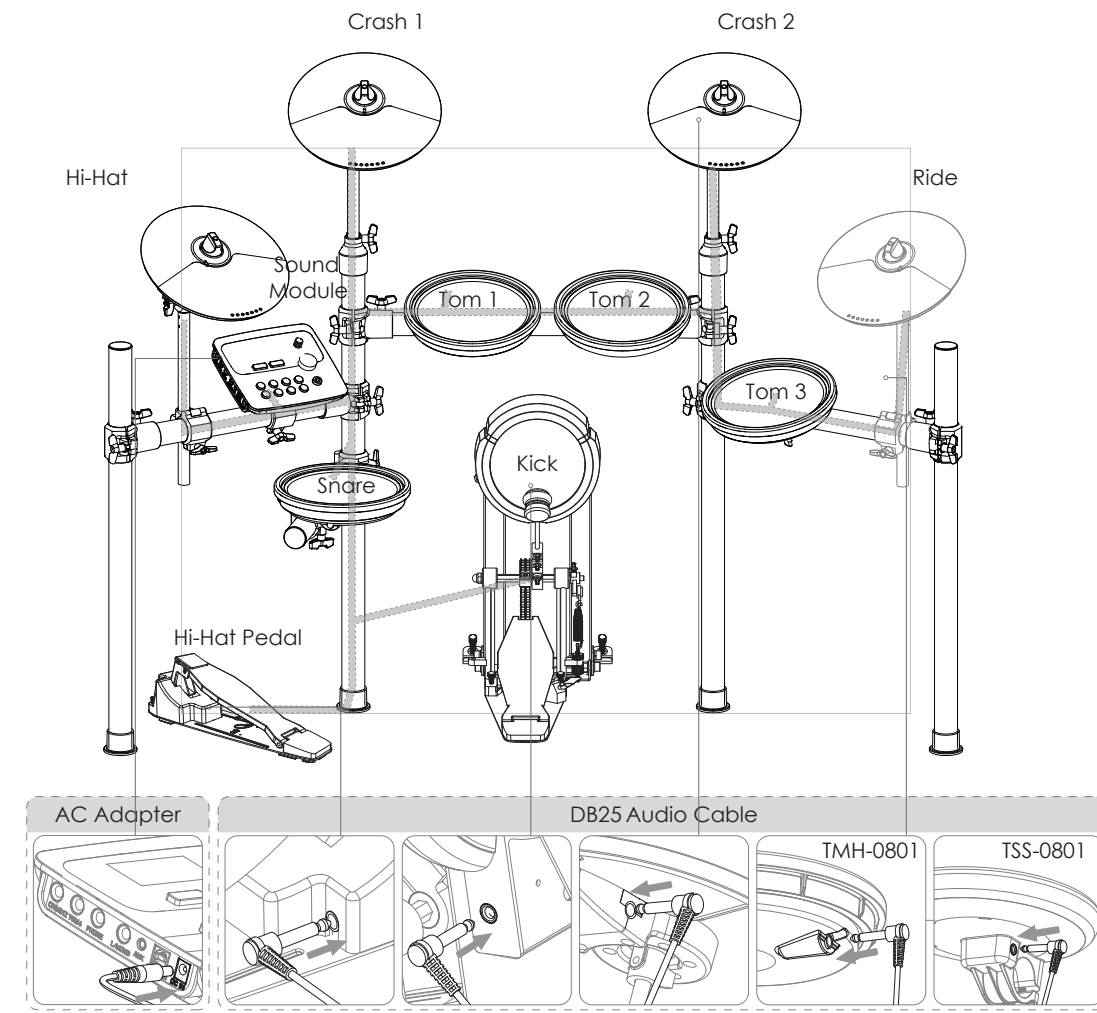
4-B. Attach the Kick Pedal



5. Attach the Sound Module



6. Power Connection & Wiring



7. Getting Ready to Play

