

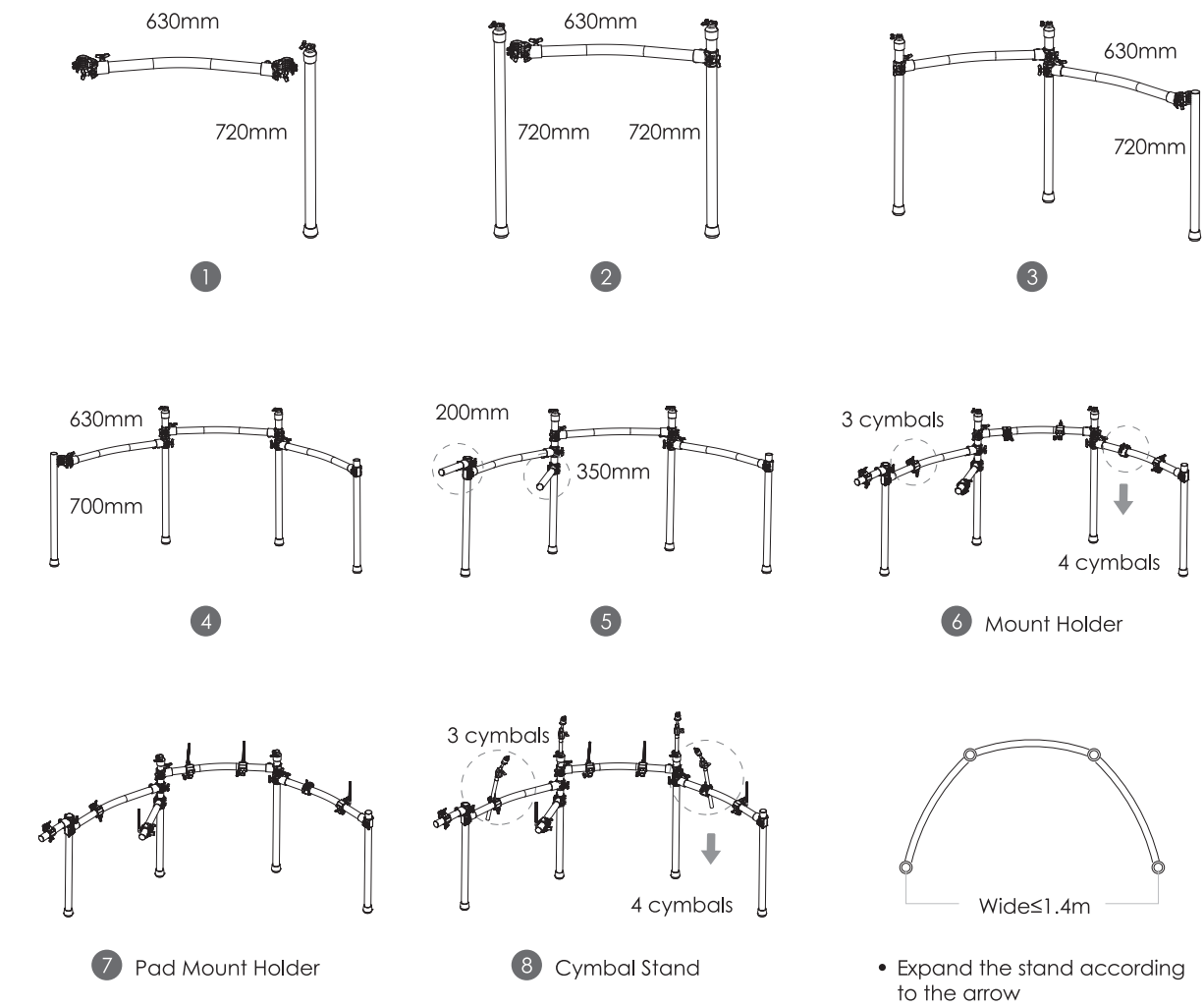
1. Assemble the Stand

HAMPBACK

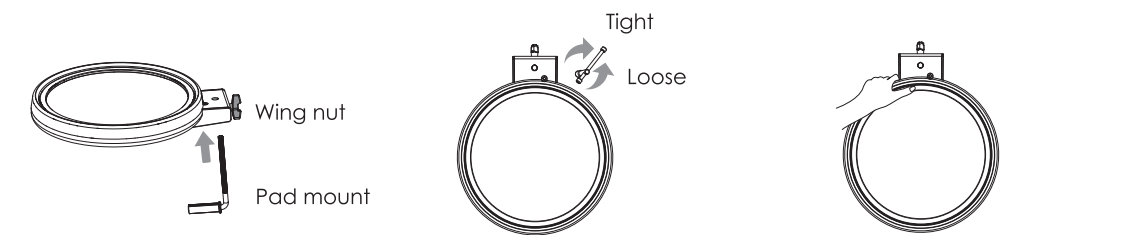
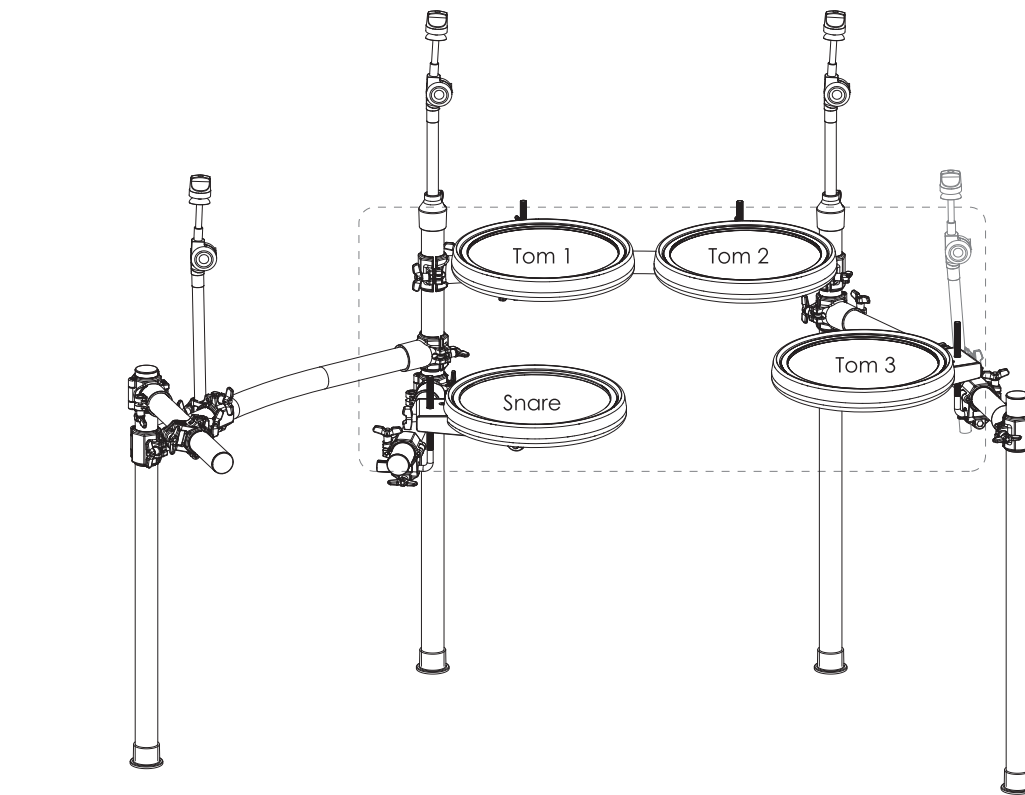
2. Assemble the Pad

3-A. Attach the Cymbals

3-B. Install the hi-hat stand



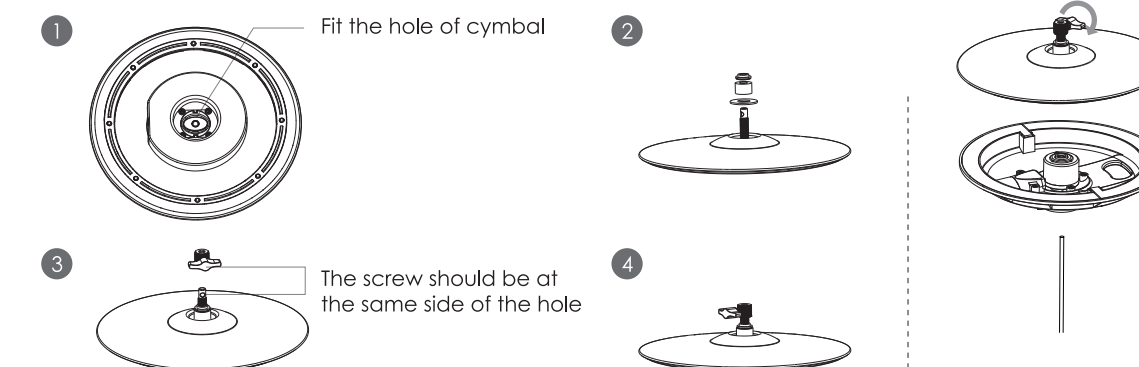
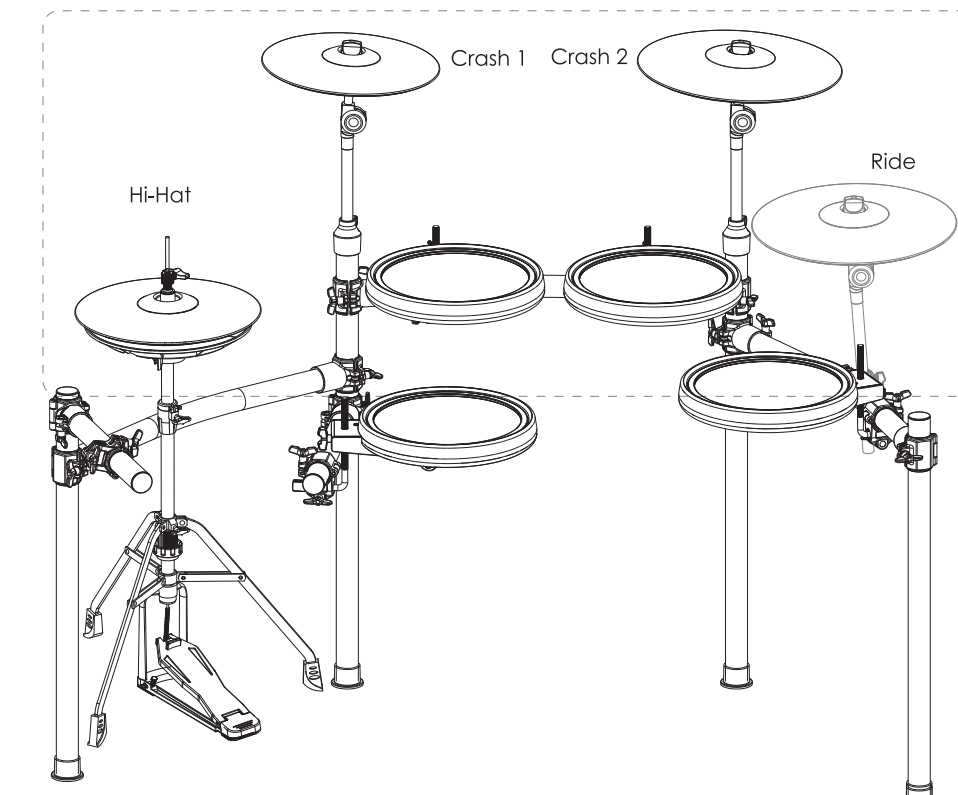
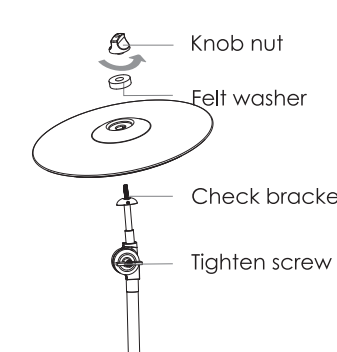
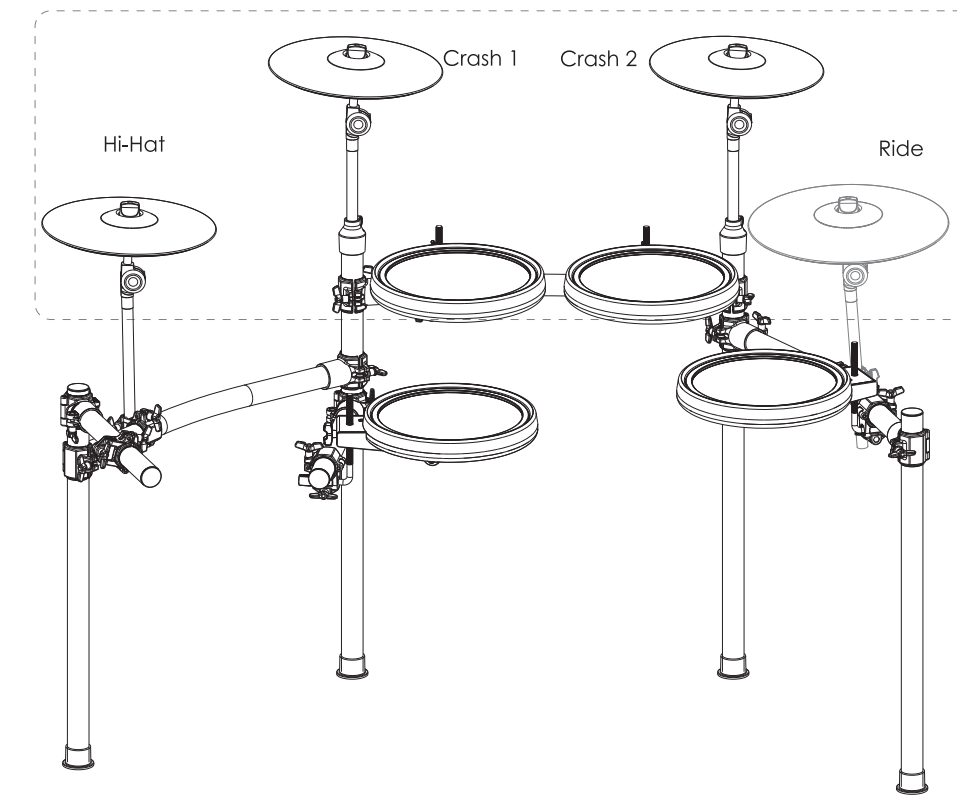
• According to above figure, to assemble the stand and pad in turn.



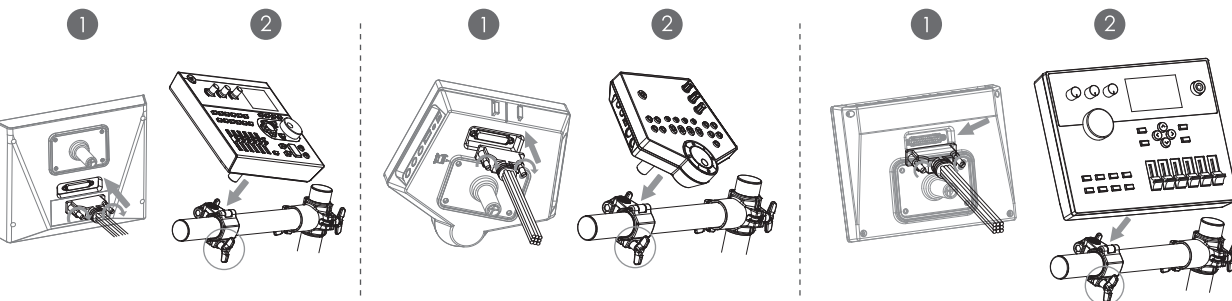
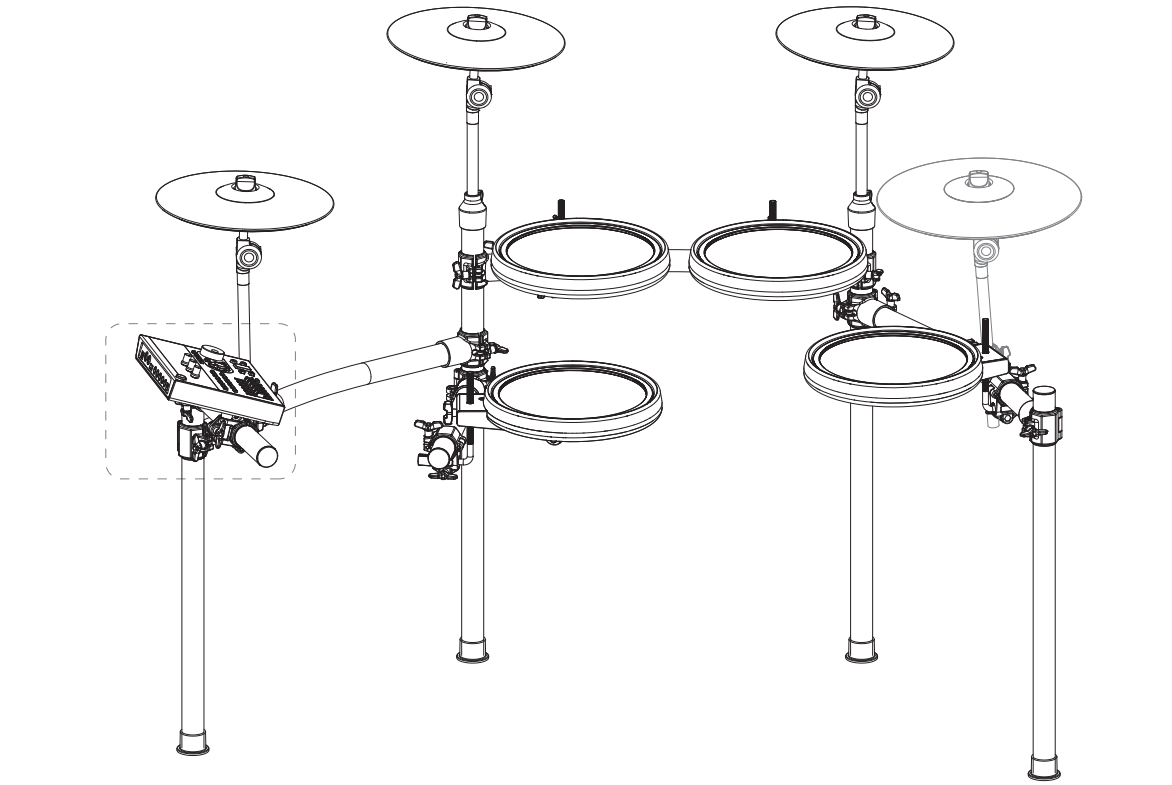
• Insert pad mount and tighten the wing nut

Adjust the head tension

• When the tom could not be tighten by screw on it, try to press on the tom (as shown in the figure) and tight it clockwise

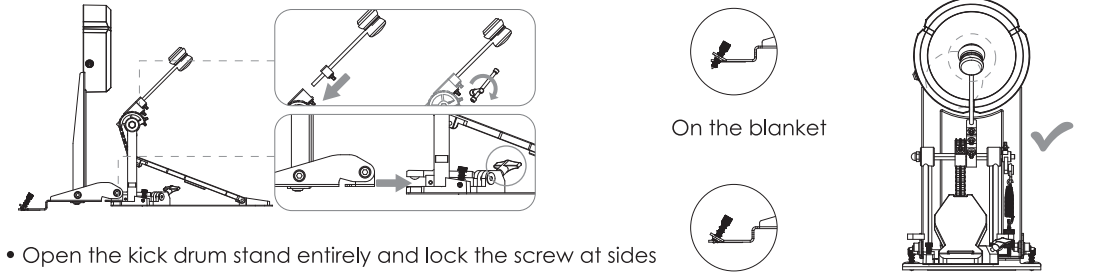
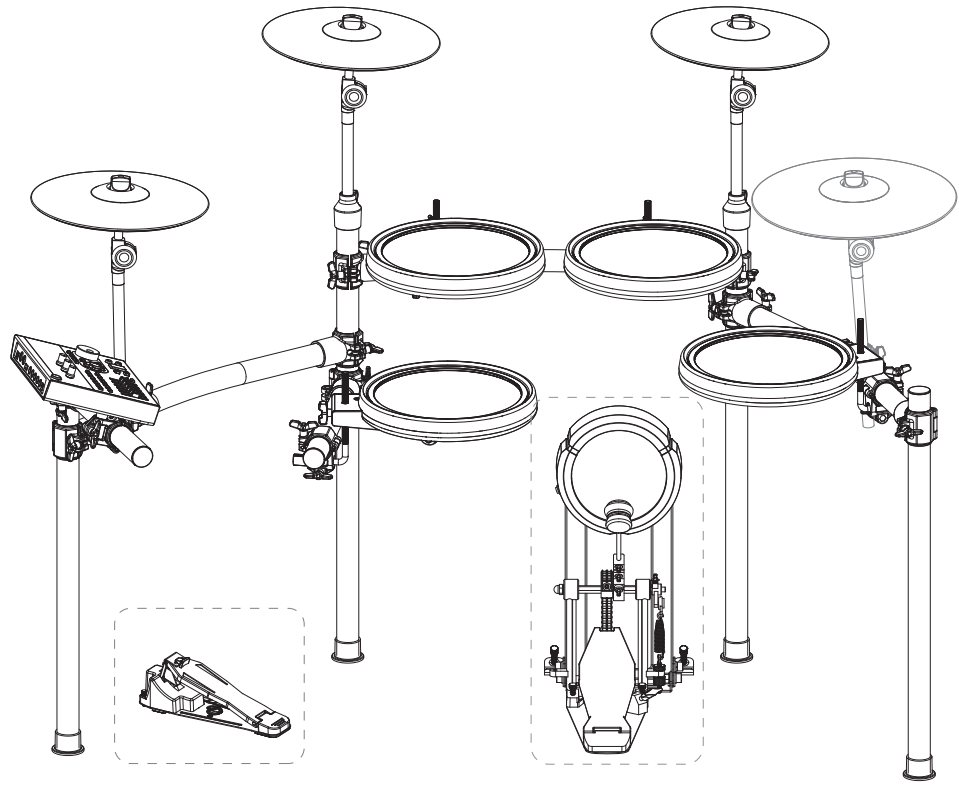


4. Attach the Sound Module



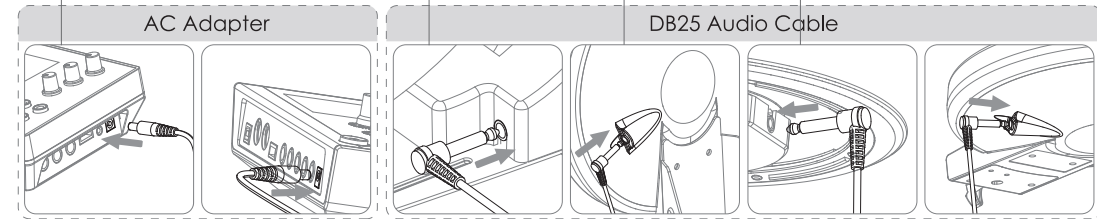
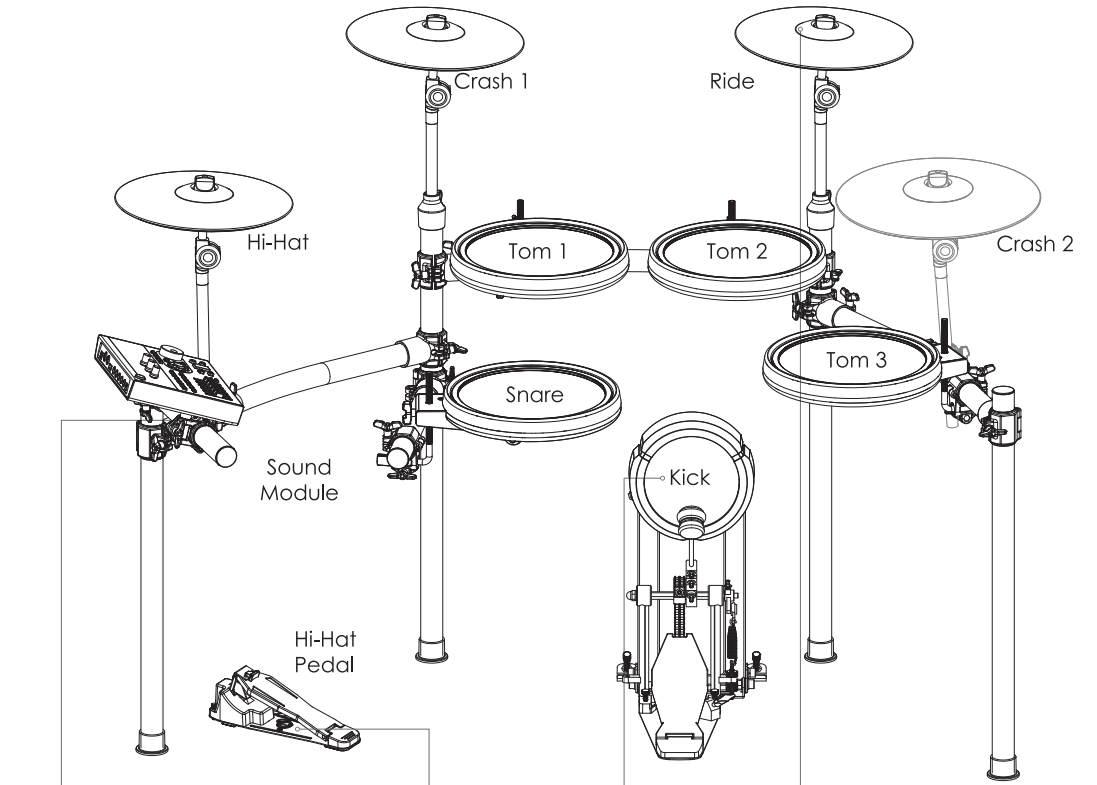
- A: connect DB25 Audio cable and fix it. B: insert sound module and adjust wing knob to fix it.

5. Attach the Kick Pedal



- Open the kick drum stand entirely and lock the screw at sides
 - Install the beater into the holder securely by fixing the screw
 - Install the kick pedal securely
- On the blanket
- On the floor
- Position beater at the center of kick drum

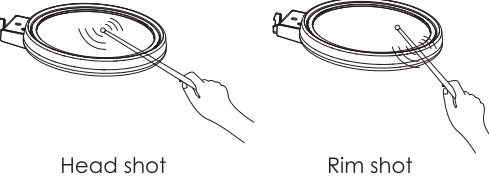
6. Power Connection & Wiring



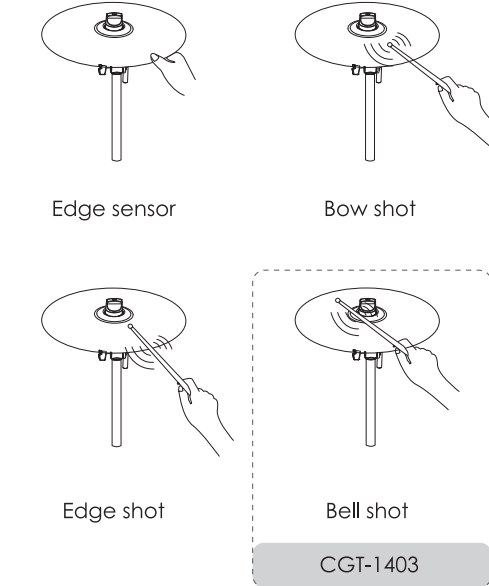
- To connect the jacks as shown in the figure, and using cable clip to organize the cables

7. Power Connection & Wiring

Pads: (Snare, Tom1/2/3)



Cymbals: (Hi-Hat, Crash, Ride)

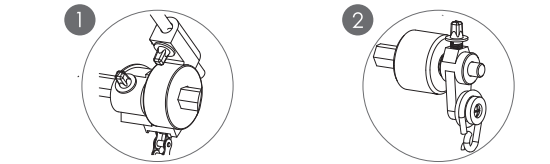
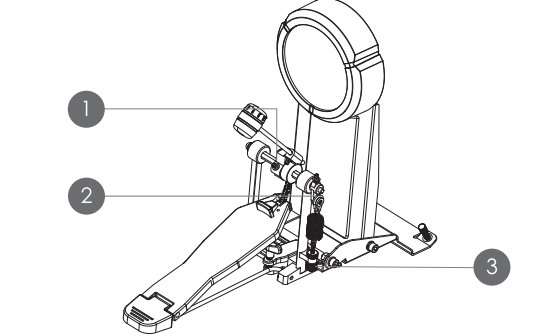


Hi-Hat Control Pedal



Open Hi-Hat Half-open Hi-Hat Closed Hi-Hat

Adjust the beater



Adjust the center of gravity of beater

Adjust the gradient of beater



Adjust the tightness of spring